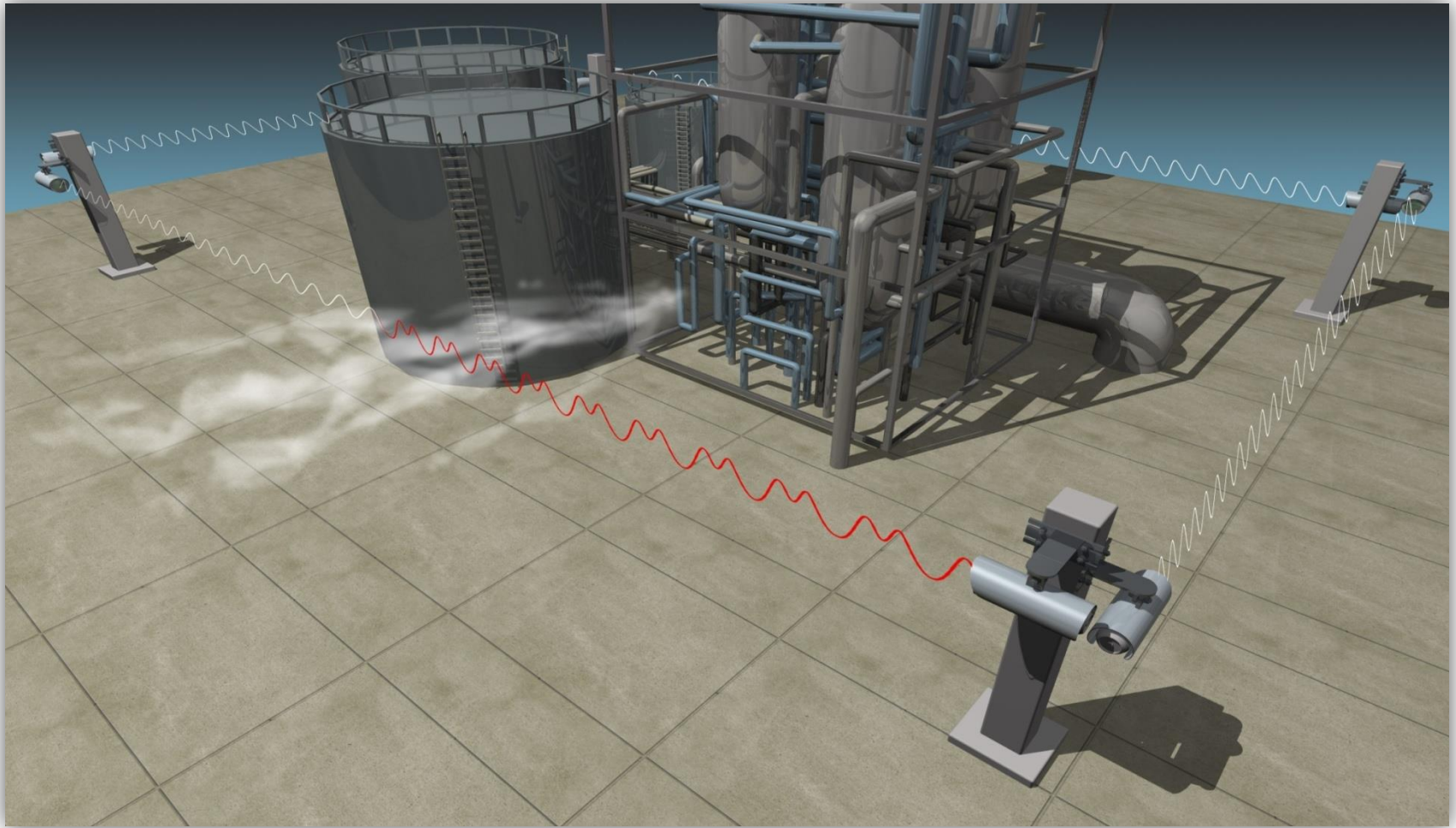


EMR[®] ENVIRONMENTAL EQUIPMENT INC.

Open Path Infrared Methane Gas Analyzer



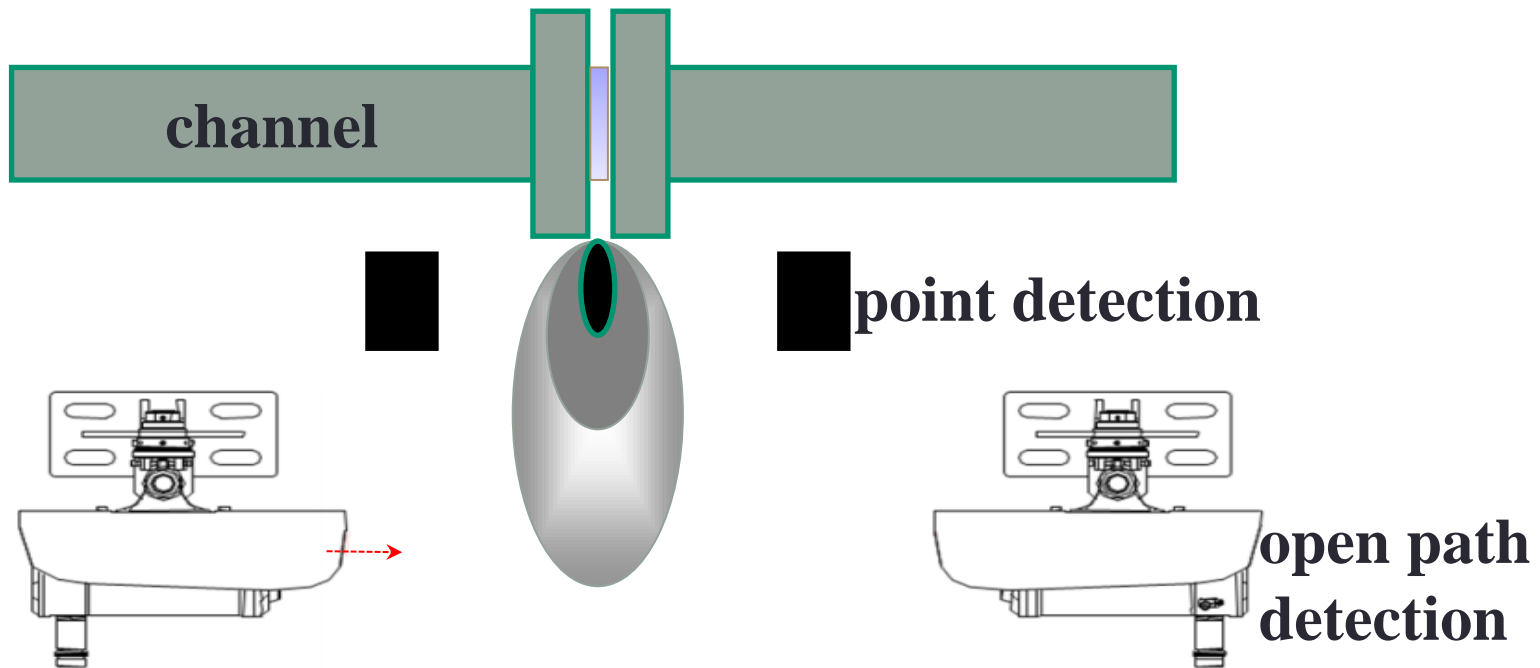
System Site Layout



Why choose open path gas detector?

- Shortcomings of semiconductor, catalytic and electrochemical detectors:
 - Low sensitivity
 - Long response time
 - Low anti-interference feature
 - Easily being influenced by the other gases

- Advantages of open path detectors:
 - Suitable for wider application places
 - Faster response



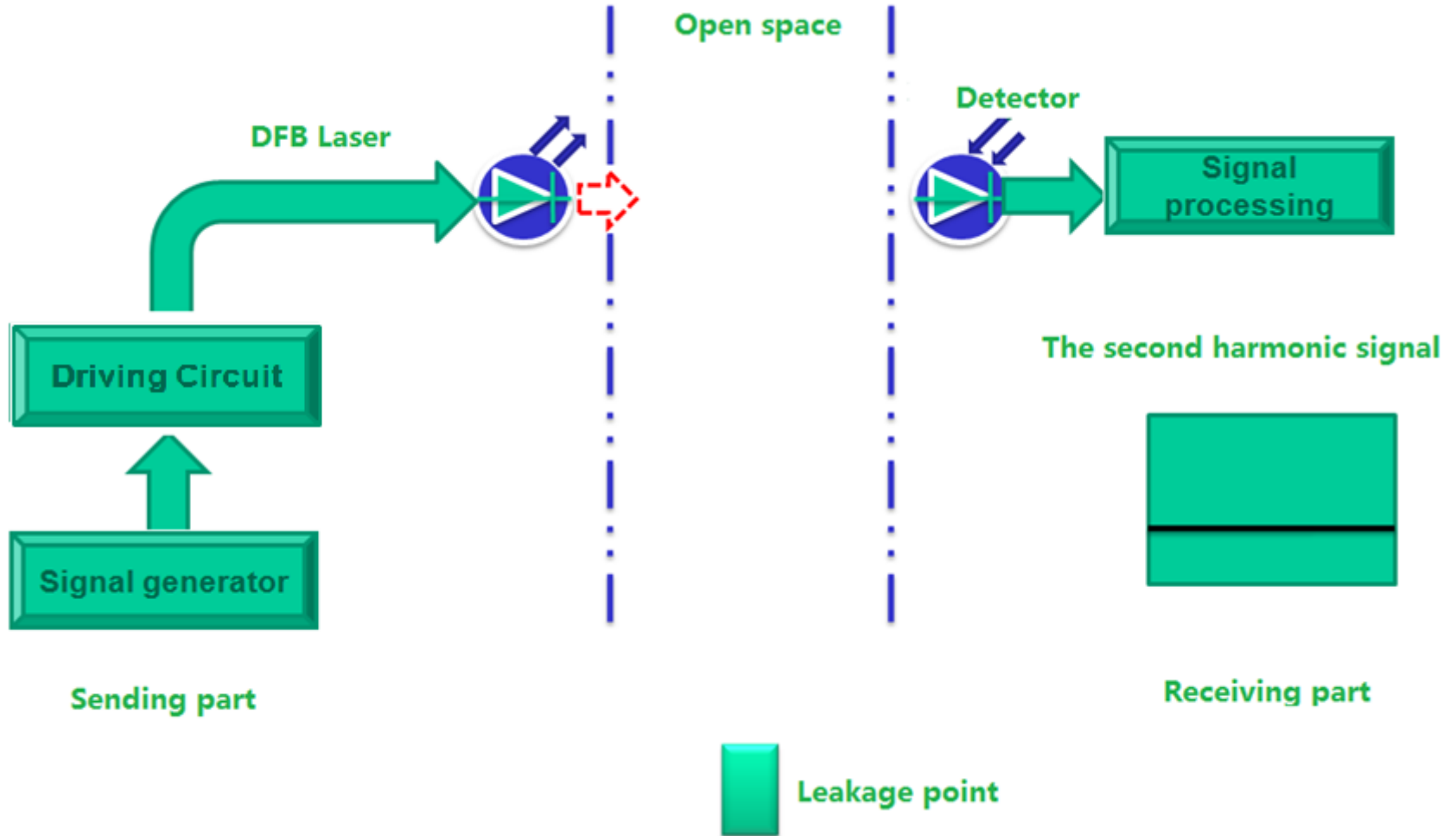
Principle and Technology

- Principle---Beer Lambert (Beer-Lambert) law

$$I(t) = I_0(t) \exp[-\alpha(\nu)CL]$$

- Technology---TDLAS Technology (Tunable semiconductor laser absorption spectrum technology).
- Advantage---It's good to solve the problems of interference by background gases, dust, pollution of the environment, etc. The IMR8000 possesses a higher selectivity and a faster response time than other devices.

System Diagram Drawing



Advantages of the IMR 8000

1. Advanced technology of TDLAS
2. Selectivity to methane. There is not interference
3. High accuracy and sensitivity and repeatability
4. Resistance to natural elements like wind, sand, water, vapor and shock
5. Long life span and low maintenance cost

Working Environment

1. Fog, rain, sleet, snow and ice:
 - With heated optics, working temperature is $-40^{\circ}\text{C} \sim +60^{\circ}\text{C}$ and humidity is $0 \sim 95\% \text{RH}$;
 - Work normally even beam decreasing about 90%.
2. Sea water or severe environments:
 - 316L stainless steel housing
 - IP66 design
3. Beam fault alert:
 - Through 4-20mA or RS485 signal output.



Applications

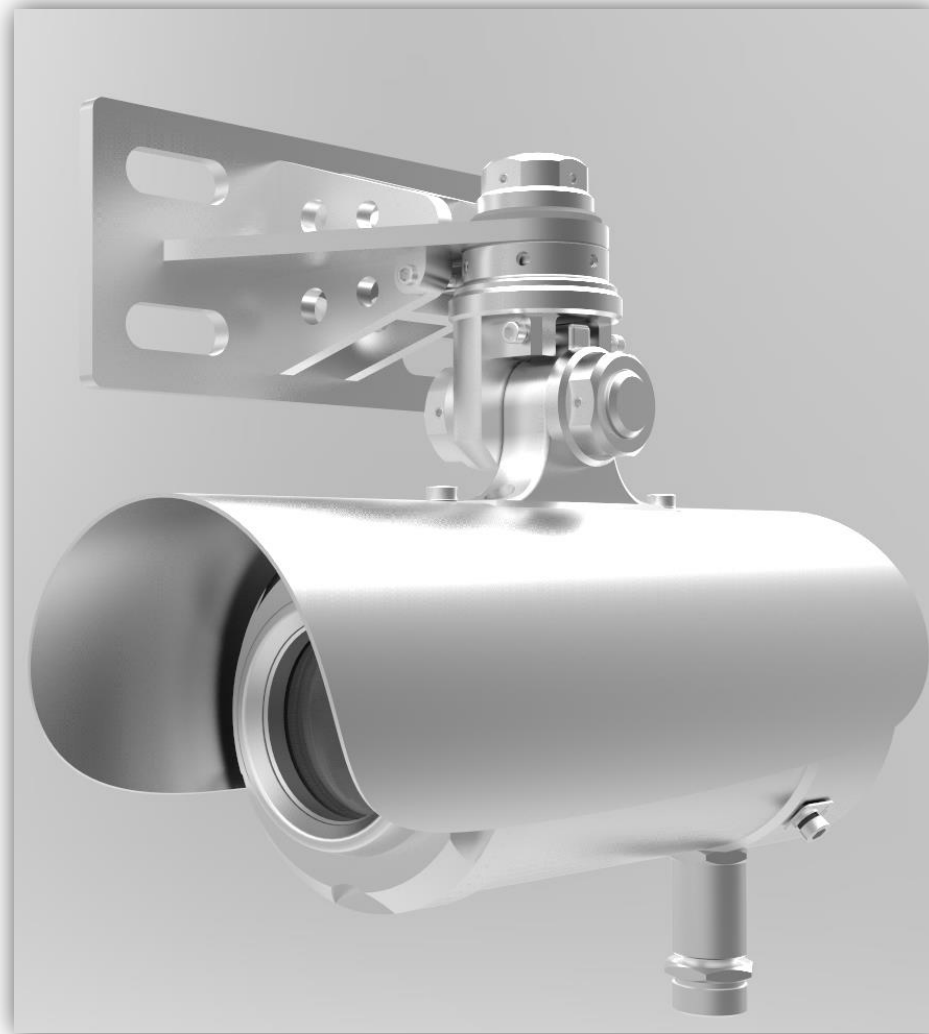
- Natural gas pipelines
- Oil platform
- Separation of gas storage station



Specifications

- Range: 0 ~ 100%LEL · m
- Working distance: 120m
- Working humidity: 0 ~ 95%RH
- Working temperature: -40°C ~ +60°C
- Zero drift: ±5%LEL·m
- Ingress protection: IP66
- Ex d IIC T6 Gb
- 316L stainless steel housing
- 4 ~ 20mA or RS485 signal output

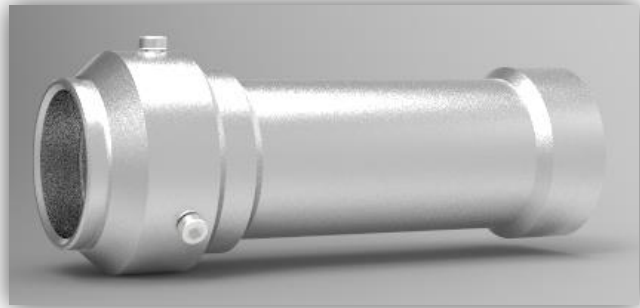
High precision mechanical construction



Accessories

- Calibration Equipment
- User Manual

Calibration Gas Chamber



Remote Controller



IMR Environmental Equipment, Inc.

-Contact Information

3632 Central Avenue

Saint Petersburg, Florida 33711

Phone: 727-328-2818

Fax: 727-328-2826

Web: www.imrusa.com

Email: info@imrusa.com

END OF PRESENTATION

Any Questions?