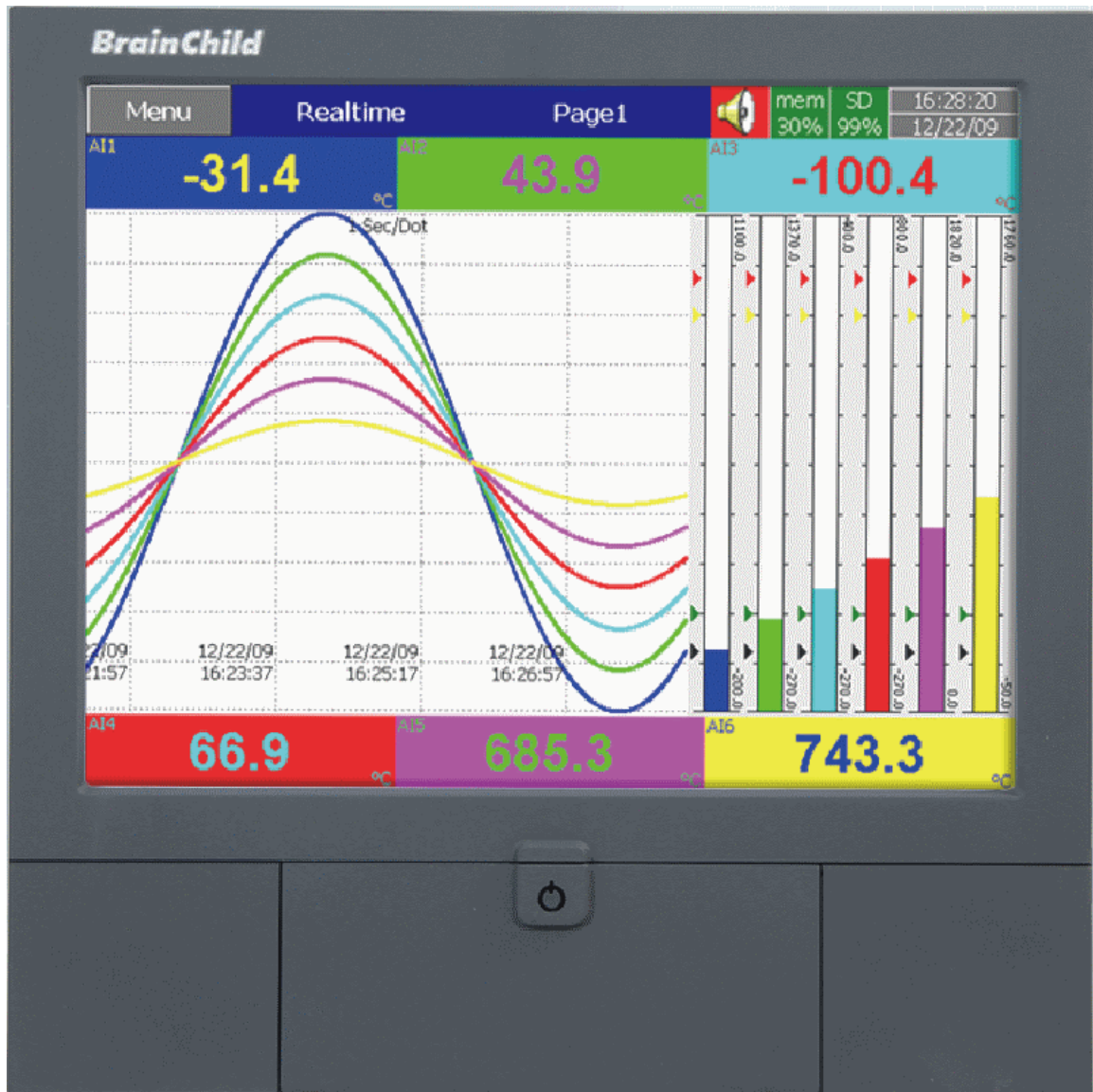




Environmental Equipment, Inc.

IMR SDU5030



(727) 328-2818 / (800) RING-IMR • Fax: (727) 328-2826
www.imrusa.com • info@imrusa.com



SPECIFICATIONS

GENERAL

- 12 or 18 analog inputs
- 12.1" TFT touch screen (1024 x 768)
- Backlight
- Screen Saver
- Automatic Email of events (Ethernet Only)
- Web Server (Ethernet Only)
- Ingress Protection: IP 65 front, IP20 rear
- Operating Temperature: 0°C to 50°C
- Safety Standards: CE cULus, RoHS
- Security Key

COMMUNICATION

- Ethernet: Modbus TCP/IP
- RS-232: Modbus RTU*
- RS-422/485: Modbus RTU*
- 12: 4-20mA outputs

*RS-232 or RS422/485 must be selected at time of purchase

STORAGE

- SD card slot with 16GB card
- USB host port: One in front and one on back

LANGUAGES

- Multilingual Interface: Brazil Portuguese, Chinese (simplified, traditional), Czech, Danish, Dutch, English, French, German, Greek, Italian, Japanese, Korean, Polish, Portuguese, Russian, Spanish, Swedish, Thai, Turkish

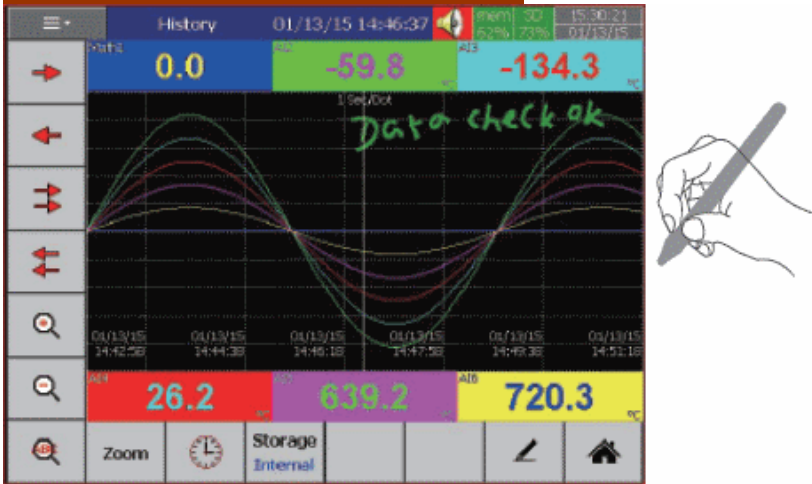
SOFTWARE

Observer 1: Historical Viewer

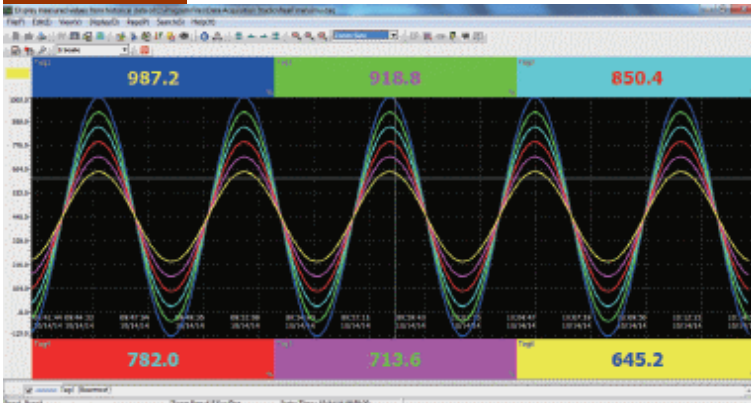
Observer 2: Historical Viewer, and RealTime Viewer



HAND WRITE MESSAGES ON SCREEN

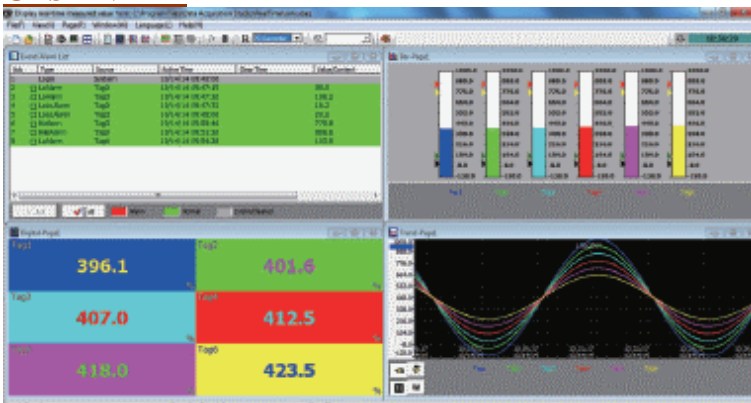


OBSERVER 1



Download and review recorded data; including historical trends, historical alarms and events. Search saved data by time, time period, tag, alarm, events and remarks. Data can also be exported into a CVS spreadsheet.

OBSERVER 2



Includes all the functions of Observer 1 and allows access to data on the recorder in Real Time.



Environmental Equipment, Inc.

IMR SDU 5030 Brochure

CONTACT INFORMATION



Environmental Equipment, Inc.

3632 Central Ave.
St. Petersburg, FL 33711
USA

Phone: 727/328-2818
Fax: 727/328-2826
1800#: 1-800/746-4467

Internet: www.imrusa.com
Email: info@imrusa.com
sales@imrusa.com
technical_department@imrusa.com

IMR® is a registered Trademark of IMR® Environmental Equipment, Inc.

3632 Central Ave. St. Petersburg, FL 33711
www.imrusa.com
info@imrusa.com

Phone: 727-328-2818 / 800-RING-IMR
Fax: 727-328-2826

THE PRIDE OF THE COMPANY – MADE IN THE USA